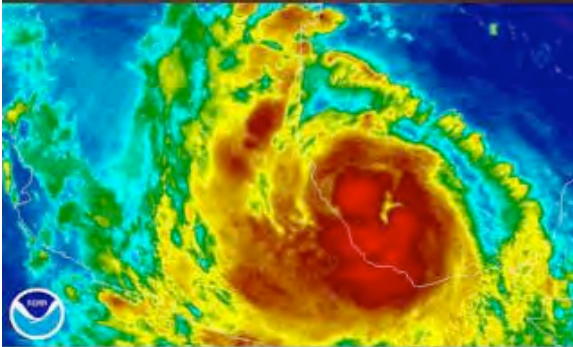


# Homeland Security S&T Summit: *South Central Region*



(FEMA Region VI)

*Arkansas – Louisiana - New Mexico – Oklahoma – Texas*

## **Border Security: Preventative Rad/Nuc Detection PRND**

**Charles Cox**

*Joint Analysis Center*

*Domestic Nuclear Detection Office*

*Department of Homeland Security*

[charles.cox@dhs.gov](mailto:charles.cox@dhs.gov)

# Homeland Security S&T Summit: *South Central Region*

## *The Radiological and Nuclear Threat*

**The risk of a terrorist acquiring and using a nuclear or radiological device is one of the greatest threats to the Nation**

- A robust, layered defense must be developed
- Each layer must reduce the terrorist's ability to use such threats against us

**The layered defense concept includes:**

- Eliminating excess stocks of nuclear materials and weapons
- Protecting existing stocks from theft or diversion
- Detecting illicit movement of nuclear or radiological material overseas
- Enhancing domestic detection and interdiction efforts



# Homeland Security S&T Summit: *South Central Region*

## *Key Mission Areas*

DNDO focuses on increasing detection capabilities in key mission areas as part of a comprehensive strategy to protect the Nation against radiological and nuclear threats.

Land Borders (CBP/BP/LLE)

Maritime (CG/LLE)

Aviation (CBP)

Domestic Interior (LLE)



Homeland  
Security

# Homeland Security S&T Summit: South Central Region

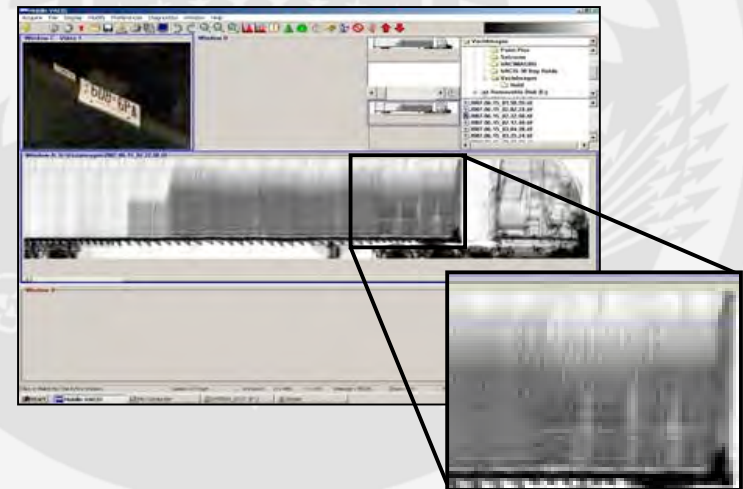
## Land Border: Port of Entry

A joint radiation portal monitor (RPM) deployment strategy was developed with Customs and Border Protection for all U.S. ports of entry (POEs)

**Incorporates an optimized mix of current and next-generation technologies that detect radiation being emitted by threat materials**

Prioritizes next generation system deployment at the POEs based on risk, vulnerability (or consequence), industries, importance to the economy and supply chain, or military bases located nearby

DNDO seeks integrated systems for the future that will detect a wide spectrum of rad/nuc threats (both shielded and unshielded materials)



# Homeland Security S&T Summit: South Central Region

## Land Border: Between POEs

### Boundary Defenses

- Fences
- Natural Barriers



### Intrusion Detection

- Unattended Sensors
- Camera Systems



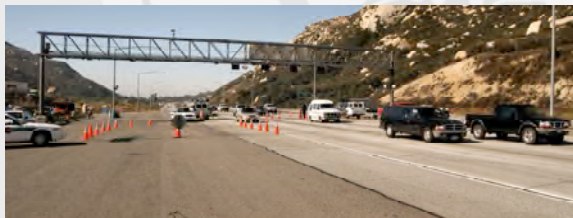
### Patrol Operations

- Observation
- Response/Interdiction



### Interior Checkpoints

- Traffic Screening
- Vehicle Inspection



1) Unattended  
Sensor Concepts

2) Vehicle-Mounted and  
Human-Portable  
Systems

3) Fixed and mobile  
RPMs for Permanent  
& Tactical Checkpoints



# Homeland Security S&T Summit: *South Central Region*

## *Maritime*

A preventive rad/nuc detection (PRND) strategy that reduces the risk of rad/nuc threats being illicitly transported on small maritime vessels

- **Exploit geographic choke points for efficiency**
- **Establish buffer zones to limit potential consequences**
- **Leverage targeting information to focus resources**



Focus on deploying detection & reporting capability consisting of human-portable, mobile, & remote radiation detection systems specifically for maritime applications

Assist with developing a maritime PRND CONOPS with alarm resolution & maritime operational threat response (MOTR) protocols



# Homeland Security S&T Summit: *South Central Region*

## *Aviation*

- An integrated, layered approach that reduces the risk of rad/nuc threats being illicitly transported on general aviation flights
  - Inspects/screens aircraft, crew, passengers, baggage and cargo as far outside U.S. populated areas as possible
  - Enhances awareness and tracking capability
  - Expands and enhances GA security programs
- Inbound general aviation flights will undergo screening at gateway airports
- DNDO working with Canada and Mexico through the Security and Prosperity Partnership (SPP) to develop a North American Nuclear Detection Architecture including layered approaches for multiple threat pathways
- International Commercial Cargo will be screened by CBP
- US airports are being equipped with rad/nuc detection systems for international cargo arrivals



# Homeland Security S&T Summit: *South Central Region*

## *Domestic Interior*

- Mitigate rad/nuc threats within the US by providing assistance, training, equipment, and coordination within States and regions
- Incorporates the needs, interests and insights of State & local entities
- Defines stakeholders as collaborative partners in planning and mission implementation
- Delivers programmatic activities to stakeholders in a clear and consistent manner
- Build rad/nuc detection capabilities at the State and local level for commercial vehicle inspection, special events, and regional pilot programs
- Implement strategy through planning, organizing, equipping, training, exercising and providing ongoing operational support



# Homeland Security S&T Summit: South Central Region

## Detection Instruments



Portal Monitors

RIID



PRD



# Homeland Security S&T Summit: South Central Region

